

## BCR-220 Repeater

Introducing the ComLink™ BCR-220 FM Repeater System by BridgeCom Systems, Inc. built for Amateur Radio. The BCR-220 operates in 222-225 MHz (1.25m) range of the RF Spectrum. The BCR-220 is a feature rich repeater/base station. Packed with loads of RF power, this dual fan-cooled unit is an excellent choice if you're considering a 220 repeater for your club. It is also an excellent choice for A.R.E.S./R.A.C.E.S. operation, emergency management. Get on the 1.25m band today with a BCR-220.



### Specification

General	BCR-220
Number of Channels:	16
Operating Voltage:	11 V DC Min / 13.8 V DC Nominal / 15 V DC Max
Channel Spacing:	20kHz/12.5kHz
Rated Current Drain:	11.2A Max
Weight:	18 lbs.
Weight w/ duplexer:	20 lbs.
Frequency Range:	222.0-224.995 MHz
Dim. (W x H x D):	19.0" x 3.5" x 13.5"
Frequency Stability:	+/- 1.5 ppm
Operating Temperature Range:	-22° F to +140° F (-30° C to +60° C)

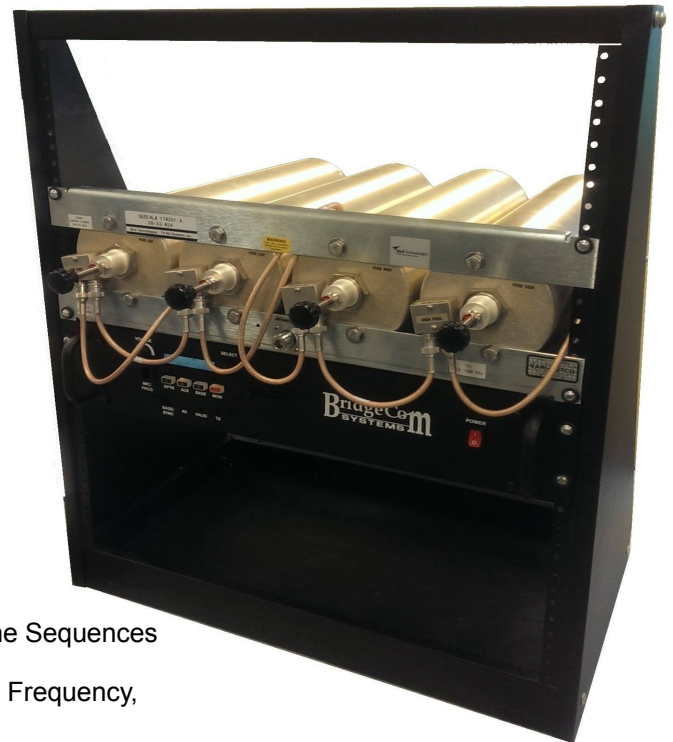
In our on-going commitment to quality, specifications are subject to change without notice.

Receiver	BCR-220
Local Oscillator:	Low-side injection
Sensitivity	0.25 $\mu$ V 12dB SINAD 0.22 $\mu$ V 10dB SINAD
Squelch Threshold:	Open 12dB SINAD/Close 8dB SINAD
Selectivity:	65dB @ 12.5kHz 70dB @ 20.0kHz
Spurious Rejection:	70dB
Intermodulation Rejection:	72dB @ 12.5kHz 72dB @ 20.0kHz
Antenna Connector:	N-Type
Antenna Impedance:	50 $\Omega$
Transmitter	BCR-220
RF Output (w/o duplexer): Programmable	222.0-224.995 0-30W Adjustable
Modulation:	16K0F3E, 11K0F3E
Maximum Deviation:	+/- 5kHz (20 kHz) +/- 2.5 kHz (12.5 kHz)
FM Hum and Noise	40dB @ 12.5kHz 45dB @ 20.0kHz
Antenna Connector:	N-Type

# Features

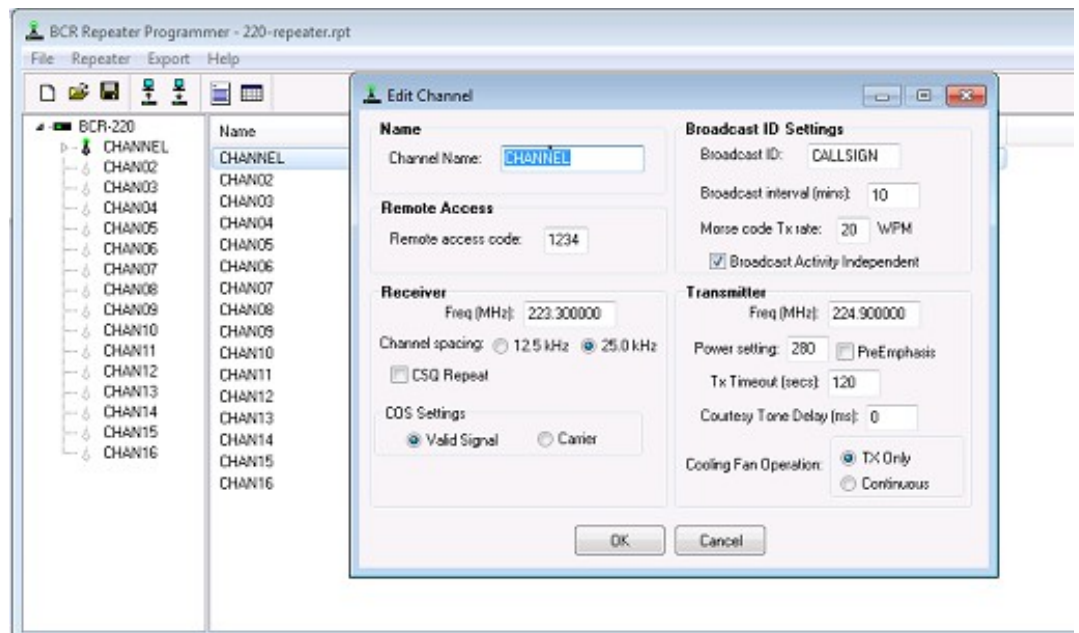
- 1.25m (222-225 MHz) - 30 Watts Continuous Duty
- Designed and built in the USA
- Built-In 11.2A Power Supply
- Battery Backup with Built-in Charging Circuit
- Continuous Duty
- 13.8 Volts Output
- Repeater Disable Function via DTMF remote control
- Dual Cooling Fans
- Front Panel Speaker
- External Speaker Out
- LCD Display
- 25-pin Accessory Connector:
  - RX Discriminator Out
  - External PTT In
  - TX Audio In
  - +13.8V Out (1A Max)
  - COS (Carrier Operated Switch) Output
- CTCSS/DCS Encode On/Of
- Selectable Tx Preemphasis On/Off
- Keypad Lock
- Adjustable Squelch
- 12.5 kHz/25 kHz Channel Spacing
- Over-the-Air Programming and Maintenance via DTMF Tone Sequences
- Adjustable RF Power
- Transmitter Fine tuning - TX Voice and TX Sub Audible, TX Frequency, and CW ID Deviation Adjust
- TX Timeout Timer
- Per User Features:
  - Air Time Logging
  - Courtesy Tone (0, 500, 1000, 1500)
  - TX Hang Timer
  - Tone-In-Tail Selectable for quicker decodes
- Built-in station CWID - Morse rate programmable 10-25 wpm.
- CSQ Repeat
- Carrier Operated Switch (COS) output - Valid signal or Carrier
- Connects to all your peripherals
- Windows® Based Programmer (Sold Separately)
- Meets FCC Part 15 class B standards - For Home or Office use
- 2 - year warranty

Turn-Key System: BCR-220 and Duplexer



**BridgeCom**  
SYSTEMS

102 NE State Route 92, Ste C  
Smithville, MO 64089  
816-532-8451  
www.BridgeComSystems.com



Windows® Based Programmer Screen Shot