

REVISION RECORD			
LTR	ECD NO:	APPROVED:	DATE:

Unless otherwise noted:
 All resistance values in ohms, 1/8 watt, 5%.
 All capacitance values are in microfarads.

COMPANY: Pion and Simon Electronics PO Box 23651, Tigard, OR 97281	
TITLE: PSE-702 Repeater Controller Copyright (C) 2012 by Pion and Simon Electronics, all rights reserved.	
DRAWN: EAS / ALP	DATED: JUNE 9, 2012
CHECKED:	DATED:
QUALITY CONTROL:	DATED:
RELEASED:	DATED:
CODE:	SIZE:
DRAWING NO:	REV: 2.1
SCALE:	SHEET: 1 OF 5

6

5

4

3

2

1

REVISION RECORD			
LTR	ECD NO:	APPROVED:	DATE:

D

C

B

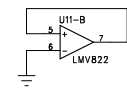
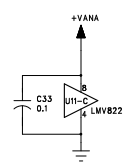
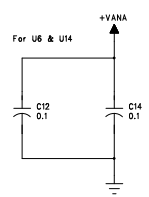
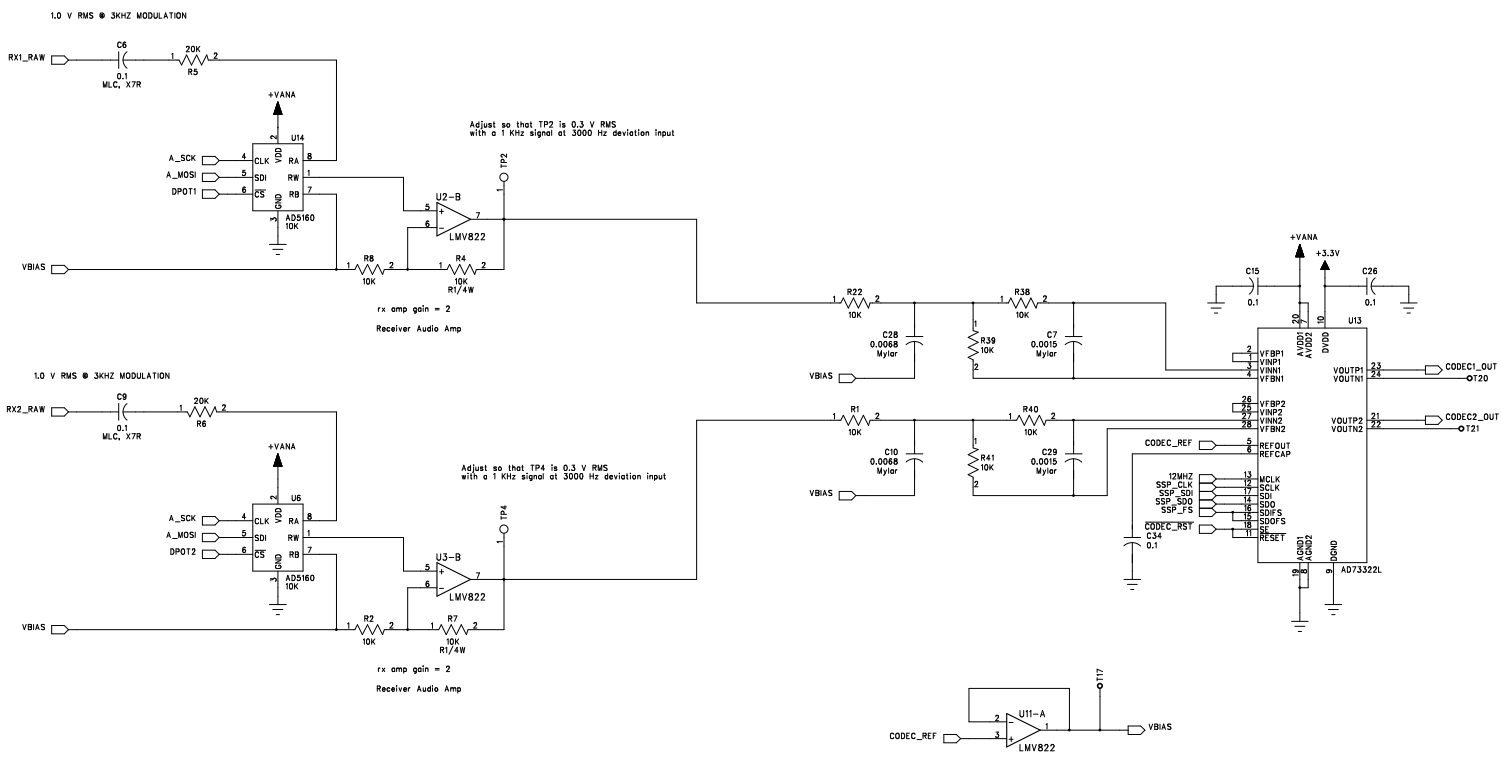
A

D

C

B

A



Unless otherwise noted:
All resistance values in ohms, 1/4 watt, 5%.
All capacitance values are in microfarads.

DRAWN:	EAS / ALP	DATED:	JUNE 9, 2012
CHECKED:		DATED:	
QUALITY CONTROL:		DATED:	
RELEASED:		DATED:	

COMPANY: Pion and Simon Electronics
PO Box 23651, Tigard, OR 97281

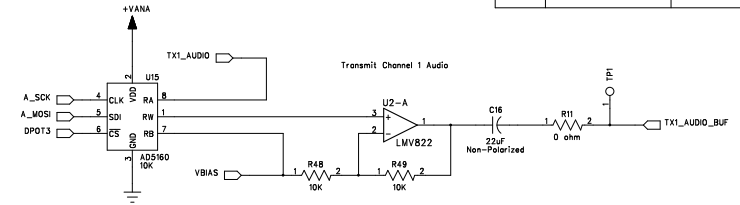
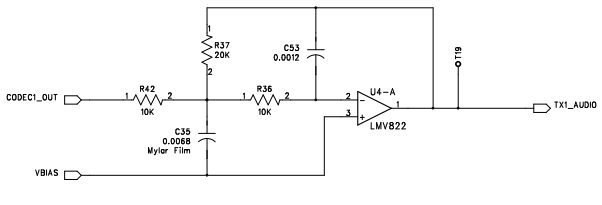
TITLE: PSE-702 Repeater Controller
Copyright (C) 2012 by Pion and Simon Electronics, all rights reserved.

CODE:		SIZE:		DRAWING NO:		REV:	2.1

6 5 4 3 2 1

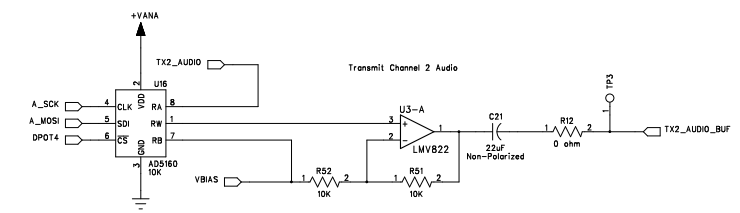
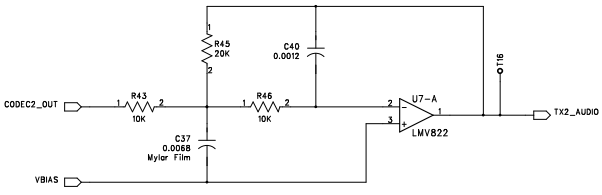
REVISION RECORD			
LTR	ECCO NO:	APPROVED:	DATE:

D



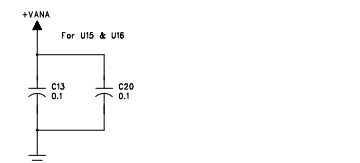
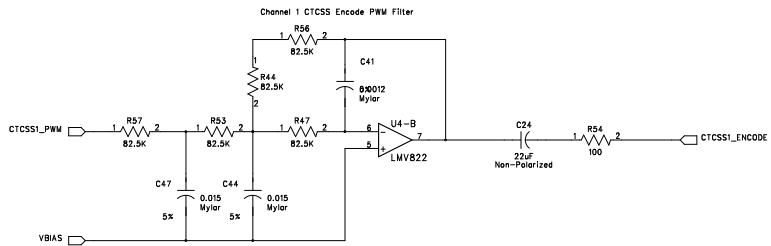
D

C



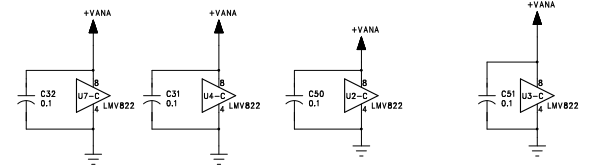
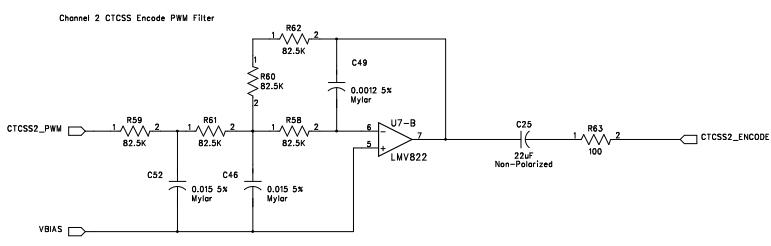
C

B



B

A



COMPANY: Pion and Simon Electronics
 PO Box 23651, Tigard, OR 97281

TITLE: PSE-702 Repeater Controller
 Copyright (C) 2012 by Pion and Simon Electronics, all rights reserved.

DRAWN: EAS / ALP	DATED: JUNE 9, 2012
CHECKED:	DATED:
QUALITY CONTROL:	DATED:
RELEASED:	DATED:

CODE:	SIZE: C	DRAWING NO:	REV: 2.1
SCALE:			SHEET: 3 OF 5

6

5

4

3

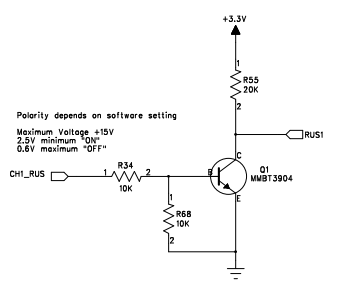
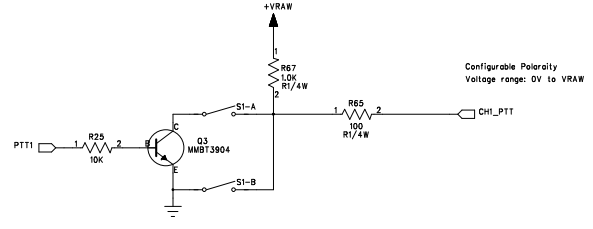
2

1

REVISION RECORD			
LTR	ECD NO:	APPROVED:	DATE:

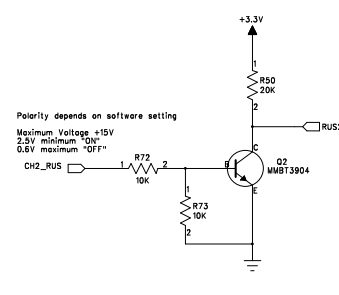
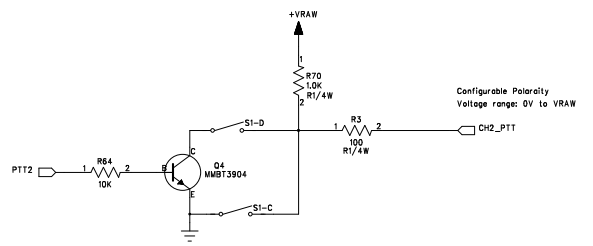
D

D



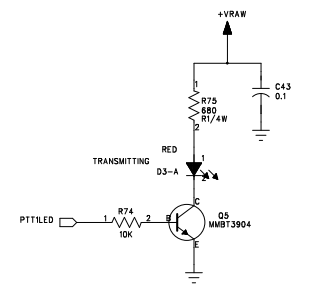
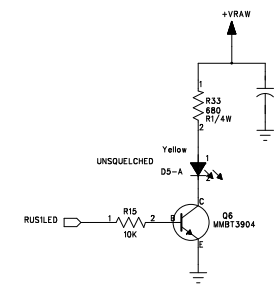
C

C



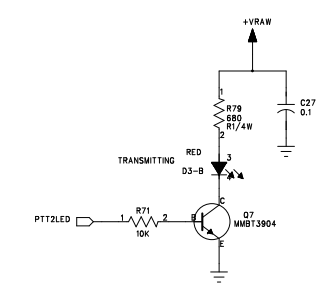
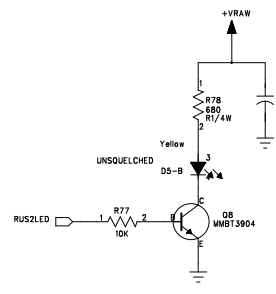
B

B



A

A



COMPANY: Pion and Simon Electronics
PO Box 23651, Tigard, OR 97281

TITLE: PSE-702 Repeater Controller
Copyright (C) 2012 by Pion and Simon Electronics, all rights reserved.

DRAWN: EAS / ALP	DATED: JUNE 9, 2012
CHECKED:	DATED:
QUALITY CONTROL:	DATED:
RELEASED:	DATED:

CODE:	SIZE: C	DRAWING NO:	REV: 2.1
SCALE:		SHEET: 4 OF 5	

6

5

4

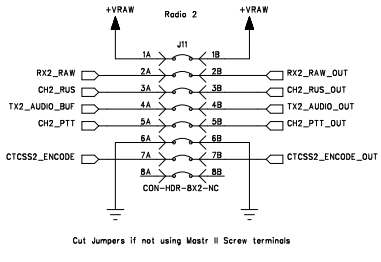
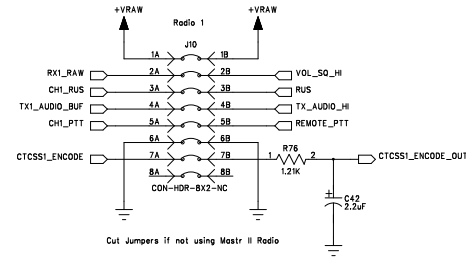
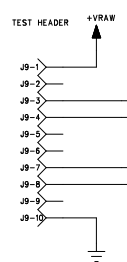
3

2

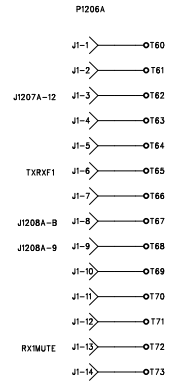
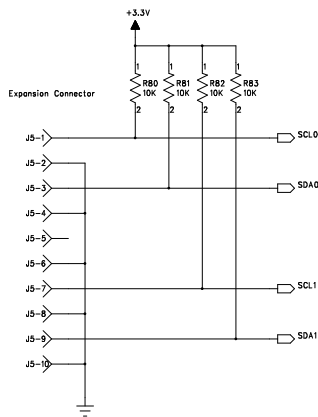
1

REVISION RECORD			
LTR	ECD NO:	APPROVED:	DATE:

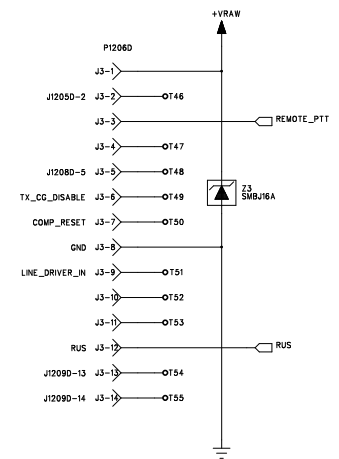
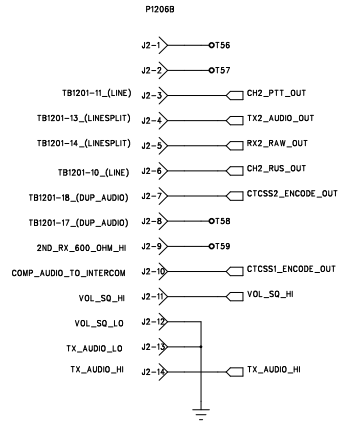
Daughter Board Connectors



Mounting hole for daughter board
M1 MTHOLE



Card Edge Connectors



M2 MTHOLE
M3 MTHOLE
M4 MTHOLE
M5 MTHOLE

COMPANY: Pion and Simon Electronics
PO Box 23851, Tigard, OR 97281

TITLE: PSE-702 Repeater Controller
Copyright (C) 2012 by Pion and Simon Electronics, all rights reserved.

DRAWN: EAS / ALP	DATED: JUNE 9, 2012
CHECKED:	DATED:
QUALITY CONTROL:	DATED:
RELEASED:	DATED:

CODE:	SIZE: C	DRAWING NO:	REV: 2.1
SCALE:		SHEET: 5 OF 5	

D

C

B

A

D

C

B

A