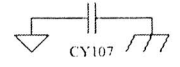
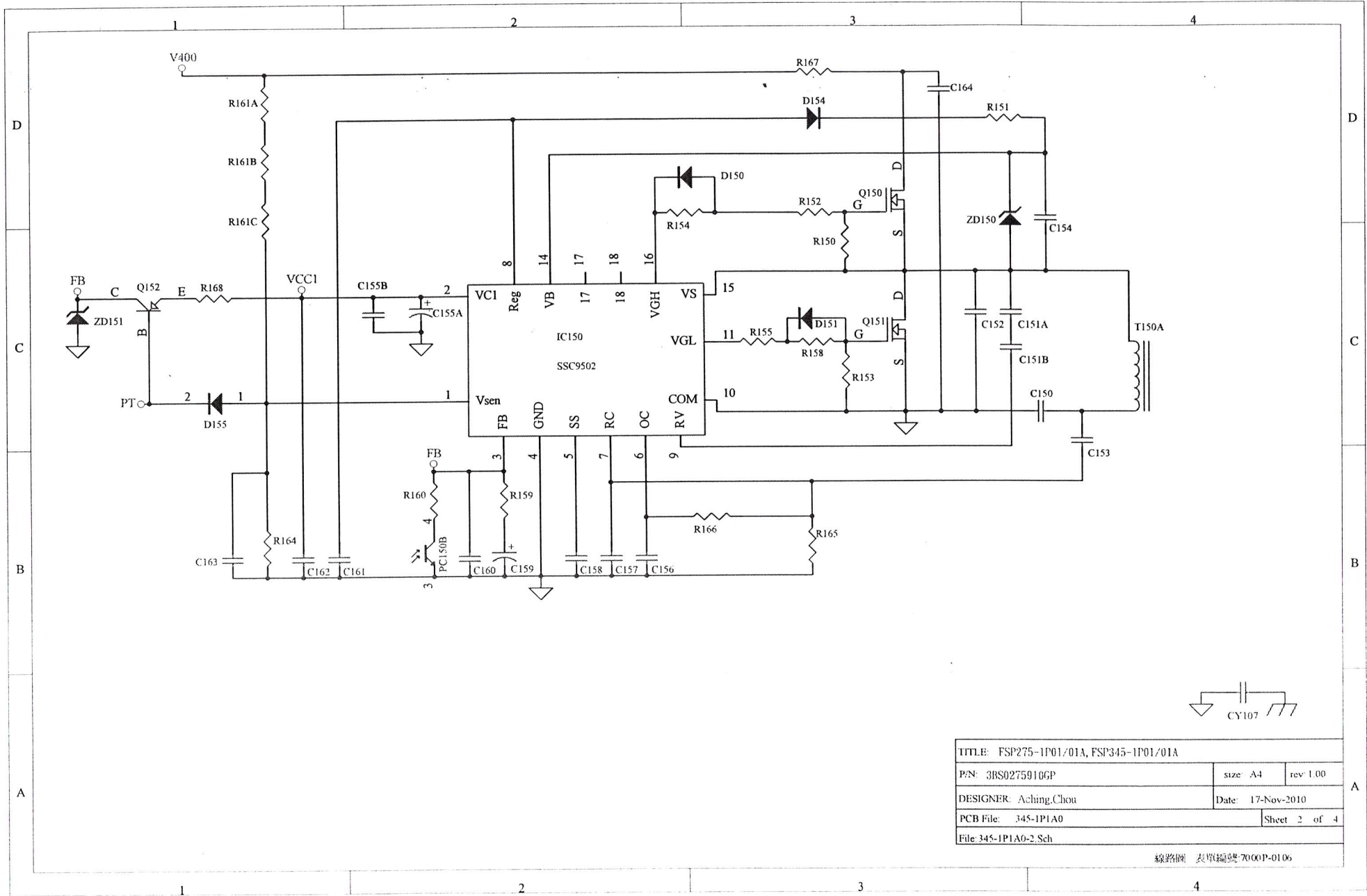


TITLE: FSP275-1P01/01A, FSP345-1P01/01A		
P/N: 3BS0275910GP	size: A4	rev: 1.00
DESIGNER: Aching.Chon	Date: 17-Nov-2010	
PCB File: 345-1P1A0	Sheet 1 of 4	
File 345-1P1A0-1 Sch		

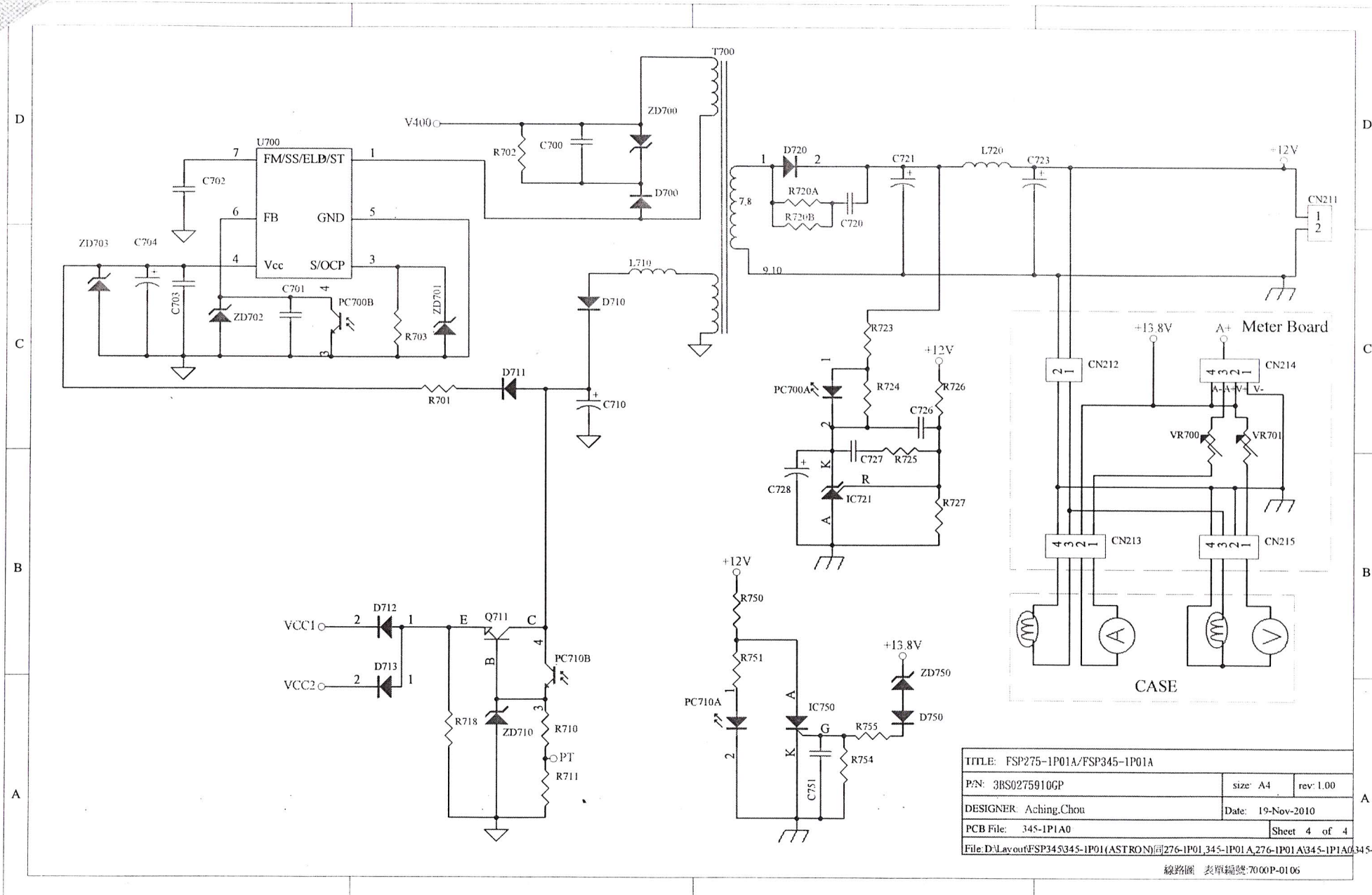
線路圖 表單編號 7060P-0106

Original Copy



TITLE: FSP275-1P01/01A, FSP345-1P01/01A		
P/N: 3BS02759106P	size: A4	rev: 1.00
DESIGNER: Aching.Chou	Date: 17-Nov-2010	
PCB File: 345-1P1A0	Sheet 2 of 4	
File: 345-1P1A0-2.Sch		

線路圖 表單編號: 7000P-0106



TITLE: FSP275-1P01A/FSP345-1P01A		
P/N: 3BS0275910GP	size: A4	rev: 1.00
DESIGNER: Aching.Chou	Date: 19-Nov-2010	
PCB File: 345-1P1A0	Sheet 4 of 4	
File: D:\Layout\FSP345345-1P01 (ASTRON)同276-1P01, 345-1P01 A, 276-1P01 A, 345-1P1A0, 345-1P1A		

線路圖 表單編號: 7000P-0106

SS-25

No	P/N	Description	Q'ty	Location
1	1DB0000428GP	,DIODE,BRIDGE,8A,600V,GLASS,GBU806,LITEON,	1	BD100
1-1	1DB0004627GP	,DIODE,BRIDGE,8A,600V,GLASS,GBU805,T.S,	1	
2	1DF0003027GP	,DIODE,FAST,1A,600V,DO-41,1N4937,T.S,	1	D710
2-1	1DF0003028GP	,DIODE,FAST,1A,600V,DO-41,1N4937,LITEON,	1	
3	1DF0008027GP	,DIODE,FAST,3A,1000V,DO-201AD,GLASS,FOR SONY,1N5408G,T.S,	1	D121
3-1	1DF0008029GP	,DIODE,FAST,3A,1000V,DO-201AD,GLASS,PG5408,PAN JIT,	1	
4	1DS0039563GP	,DIODE,SCHOTTKY,5A,600V,PG-TO220-2,2PIN,IDH05SG60C,INFINEON,	1	D120
5	1DU0001428GP	,DIODE,ULTRAFAST,1A,1000V,DO-41,UF1007,LITEON,	1	D700
5-1	1DU0001427GP	,DIODE,ULTRAFAST,1A,1000V,DO-41,HER108,T.S,	1	
6	1DZ0004414GP	,DIODE,ZENER,5.32V-5.88V,1W,DO-41,1N4734A,NXP/PHILIPS,P:11-00536-01,R.B	1	ZD701
6-1	1DZ0004489GP	,DIODE,ZENER,5.32V-5.88V,1W,DO-41,1N4734A,VISHAY,P:11-00536-01,R.B	1	
7	1DZ0006714HF	,DIODE,ZENER,13.8-14.3V,0.5W,SOD27(SC-40),NZX14C,NXP/PHILIPS,	1	ZD150
7-1	1DZ0006789GP	,DIODE,ZENER,13.8-14.3V,0.5W,DO-35,TZX14C,VISHAY,	1	
8	1DZ0007389GP	,DIODE,ZENER,9.1-9.5V,0.5W,DO-35,TZX9V1D,VISHAY,	1	ZD151
9	1IV0000215GP	,IC,VOLT REGULATOR,TO-92,1%,FOR SONY,KIA431A,KEC,	2	IC200,IC721
10	1OT0006939GP	,IC,OPTO COUPLER,CTR 130-260,DIP-4P(10.16mm),PS2561AL1-1-V-A(W),NEC,	3	PC150,PC700,PC710
11	1TN0012463GP	,TR,N-COOL MOSFET,20.7A,650V,TO-247,SPW20N60C3,INFINEON,Y:M080-10061-00	1	Q120
12	1TN0021016GP	,TR,N-MOSFET,12A,500V,TO-220FP,FOR SONY,2SK3568(Q),TOSHIBA,	2	Q150,Q151
12-1	1TN0056911HF	KEEP?1TN0092111HF,TR,N-MOSFET,11.5A,500V,TO-220F,0.52 ohm,FOR SONY,FDPF12N50NZ,FAIRCHILD,	2	
13	1TN0031916GP	,TR,N-MOSFET,1A,600V,TO-251,2SK4026,TOSHIBA,	1	Q211
13-1	1TN0031911GP	KEEP_OLD USE20111018,TR,N-MOSFET,1A,600V,TO-251,FQU1N60C,FAIRCHILD,	1	
14	1TN0045434GP	,TR,N-MOSFET,80A,75V,TO-220AB,9m ohm,IRFB3607PbF,I.R,	2	Q210A,Q210B
15	1TN0061248GP	,TR,N-MOSFET,2.6A,650V,TO-220F,STR-W6251LF2012,SANKEN,	1	U700
16	2CD0014021GP0T	,CAP,CD,10P,J,1KV,NPO,6.5*5,TAPING,1NPO100J102S54E,SUCCESS,	1	C151A
16-1	2CD0014024GP0T	,CAP,CD,10P,J,1KV,NPO,6*4.5,TAPING,CHM6100JL,PAN OVERSEAS/WALSIN(DIP),	1	
16-2	2CD0014013GP0T	,CAP,CD,10P,J,1KV,NPO,5*5,TAPING,CC45SL3AD100JYPN,TDK,	1	
17	2CD0018513GP	,CAP,CD,221,K,1KV,6*5,CK45-R3AD221K-VR,TDK,	1	C700
17-1	2CD0018532GP0T	,CAP,CD,221,K,1KV,6*5,TAPING,V-KINK,DESD33A221KN2A,MURATA,	1	
18	2CX0005181GP	,CAP,X2,474,K,275V,BOX,18L*10T*16H*15F,PIN=20,MPX474K3ID5,CARLI,	2	CX101,CX102
18-1	2CX0011637GP	,CAP,X2,474,K,275V,BOX,17L*10.3T*16H*15F,PIN=15,HQX474K275I28SANY9,UTX,	2	
19	2CX0011481GP	,CAP,X2,473,K,275V,BOX,13L*5T*11H*10F,PIN=28,MPX473K3IC2,CARLI,	1	CX100
19-1	2CX0011437GP	,CAP,X2,473,K,275V,BOX,12L*5T*11H*10F,PIN=28,HQX473K275F28SANY,UTX,	1	
20	2CY0002024GP	,CAP,Y1,102,M,250V,CD,9.5*10,PIN=25,CDAH09E102M,PAN OVERSEAS/WALSIN(DIP)	2	CY104,CY105
20-1	2CY0006313GP	,CAP,Y1,102,M,250V,CD,8.5*10,PIN=25,CDCD85E2GA102MYAS,TDK,P:21-23763-01	2	
21	2CY0008724GP	,CAP,Y1,471,K,250V,CD,8*10,PIN=25,V-KINK,TAPING,FOR SONY,YP0AH471K070DAMD0B,PAN OVERSEAS/WALSIN(DIP)	2	CY103,CY102
21-1	2CY0008713GP	,CAP,Y1,471,K,250V,CD,9.5*10,PIN=25,V-KINK,TAPING,FOR SONY,CD95-B2GA471KYVS,TDK	2	
22	2CY0009524GP	,CAP,Y1,102,M,250V,CD,8*10,PIN=25,V-KINK,TAPING,FOR SONY,YU0AH102M070DAMD0B,PAN OVERSEAS/WALSIN(DIP)	1	CY107
22-1	2CY0009513GP0T	,CAP,Y1,102,M,250V,CD,8.5*10,TAPING,V-KINK,CD85E2GA102MYVS,TDK,	1	
23	2CY0009724GP	,CAP,Y1,331,K,250V,CD,9*10,PIN=25,V-KINK,TAPING,Y5P0AH331K080DAMD0B,PAN OVERSEAS/WALSIN(DIP)	2	CY100,CY101
23-1	2CY0008813GP	,CAP,Y1,331,K,250V,CD,9*10,PIN=25,V-KINK,TAPING,CD90-B2GA331KYVS,TDK	2	

24	2ED0013715GPE	,CAP,AL,180uF,450V,2000Hrs,105°C,M,22*40,SNAP IN,PIN=4,PITCH=10,PET,870mA,EETHC2W181HC,MATSUSHITA/PANASONIC,	1	C120A
24-1	2ED0013731GPE	,CAP,AL,180uF,450V,2000Hrs,105°C,M,22*40,SNAP IN,PIN=4,PET,PET,HU2W181MCXS5PF,HITACHI,	1	
24-2	2ED0013709GP	,CAP,AL,180uF,450V,2000Hrs,105°C,M,22*40,SNAP IN,PIN=4,PITCH=10,860mA,KMQ450VSSN180M22DE0,N.C.C,	1	
25	2ED0018108GPE	,CAP,AL,120uF,450V,3000Hrs,105°C,M,22*30,SNAP IN,PIN=4,PET,450MXG120 22*30,RUBYCON,	1	C120B
25-1	2ED0018109GPE	,CAP,AL,120uF,450V,2000Hrs,105°C,m,22*30,SNAP IN,PIN=4,PET,EKMR451VSN121MP30S,N.C.C,	1	
25-2	2ED0064031GPE	,CAP,AL,120uF,450V,3000Hrs,105°C,M,22*30,SNAP IN,PIN=4,PET,ZL12W121MCXS3WPEC,HITACHI,P:20-36271-01	1	
26	2EG0010309GP	,CAP,AL,LOW ESR,1000uF,25V,7000Hrs,105°C,M,10*30,PIN=4,KY25VB1000MJ30,N.C.C,	1	C217
26-1	2EG0010308GP	,CAP,AL,LOW ESR,1000uF,25V,5000Hrs,105°C,M,10*28,PIN=4,25YXG1000M10*28,RUBYCON,P:20-23941-01	1	
27	2EG0017009GPE	,CAP,AL,LOW ESR,22uF,50V,5000Hrs,105°C,M,5*11,TAPING,PET,KY50VB22RM5X11LLPS,N.C.C,	1	C704
27-1	2EG0005208GP	,CAP,AL,LOW ESR,22uF,50V,5000Hrs,105°C,M,5*11,TAPING,FOR SONY,YXF,RUBYCON,	1	
28	2EG0031409GP	,CAP,AL,LOW ESR,1500uF,25V,10000Hrs,105°C,M,12.5*25,PIN=15,KY,N.C.C,	2	C215,C216
28-1	2EG0026408GPET	,CAP,AL,LOW ESR,1500uF,25V,10000Hrs,105°C,M,12.5*20,TAPING,PITCH=5,PET,2480mA,25ZLH1500MG412.5x20,RUBYCON,	2	
29	2EG0122509GPEB	,CAP,AL,LOW ESR,2200uF,25V,10000Hrs,105°C,M,12.5*35,PIN=15,PITCH=5,PET,2880mA,EKY-250ELL222MK35S,N.C.C,	1	C214
29-1	2EG0015108GP	,CAP,AL,LOW ESR,2200uF,25V,6000Hrs,105°C,M,12.5*35,PIN=15,YXG,RUBYCON,	1	
29-2	2EG0103209GPET	,CAP,AL,LOW ESR,2200uF,25V,6000Hrs,105°C,M,12.5*30,TAPING,PITCH=5,PET,3450mA,EKZH250ETD222MK30S,N.C.C,	1	
29-3	2EG0103108GPET	,CAP,AL,LOW ESR,2200uF,25V,10000Hrs,105°C,M,12.5*30,TAPING,PITCH=5,PET,3450mA,25ZLH2200MEFCG4,RUBYCON,	1	
30	2EL0000909GPEB	,CAP,SOLID CAPACITOR,470uF,16V,2000Hrs,105°C,M,10*11.5,PIN=15,PET,APSC16EC3471MJB5S,N.C.C	1	C219
30-1	2EL0000918GP0B	,CAP,SOLID CAPACITOR,470uF,16V,2000Hrs,105°C,M,10*12.5,PIN=15,PCG477M016S1GNH1CK,TEAPO	1	
31	2EV0002617GP	,VARISTOR,395VAC,510VDC,14*7.5,PIN=30,FOR SONY,TVR14621KS1QY,THINKING,	1	VA100
32	2FN0005617GP	,THERMISTOR,0.7 ohm,8A,15*7.5,SCK150R78AMSY,THINKING,	1	TH100
33	2FP0002817GP	,THERMISTOR,PTC,330 ohm,0.1A,UL2651#24AWG,PIN=80,PTMS2331RP430YDP,THINKING,	1	TH210
34	2OP0034071GP	,CAP,POLYPROPYLENE,393,J,1000V,18L*10.5T*16H*15F,PIN=25,NPPS1000V393J15S,SUNGHO,	1	C150
34-1	2OP0034099GPMB	,CAP,POLYPROPYLENE,393,J,1000V,18L*10.5T*16H*15F,PIN=20,FLS(441)1000HP393J1A1,SHINYEI,	1	
34-2	2OP0034076GP	,CAP,POLYPROPYLENE,393,J,1000VH,18L*10.5T*16H*15F,PIN=20,4C6W393J-BO,TAI YANG,	1	
35	2OP0045571GP	,CAP,POLYPROPYLENE,474,J,500V,18L*6.5T*15H*15F,PIN=25,FMPP500V474J15S,SUNGHO,	1	C121
36	2RC0013614GP	,RES,C.F,1M ohm,1/4W,J,TZAI YUAN,	1	R101
37	2RO0011900GP	,RES,M.OX,100K ohm,2W,J,S-SIZE,	1	R702
38	2RO0066800GP	,RES,M.OX,0.82 ohm,1W,J,S-SIZE,	1	R703
39	2RO0078300GP	,RES,M.OX,1.8K ohm,1/2W,J,S-SIZE,	1	R721
40	2VR0009881GP	,RES,VR,2K ohm,0.05W,SIDE ADJ,???,RD915N-UA1-1B2020H03,H.T,	1	VR200
40-1	2VR0009867GP	,RES,VR,2K ohm,0.05W,SIDE ADJ,???,TP96N00PY-8S-B202,TOCOS,	1	
41	3FM0022523GP	,FAN,MIDDLE,0.089A,12V,60*25,29dB,19.3cfm,3800rpm,SLEEVE,2PIN,60mm,CONNECT,EB60251S2-0000-999,SUNON,	1	DC FAN
42	3SR0012412GP	,SWITCH,ROCKER,6A/10A,125V/250V,4PIN,21.2*15.1,RED,MR-21C-2BV-F2A,SOLTEAM,	1	SWITCH
43	3TI0000212GP	,SOCKET,INLET,10A/15A,250V,LOCK,BLACK,3PIN,C14,30*22,ST-01BY-BF9V,SOLTEAM,	1	SOCKET INLET
44	3TO0007212GP	,SOCKET,OUTLET,35A,18V,SNAP,RED(PANTONE 218U),1PIN,23.5*16,PA01-ARA0,SOLYEAM,	1	BLOCK(+)
45	3TO0007312GP	,SOCKET,OUTLET,35A,18V,SNAP,BLACK,1PIN,23.5*16,PA01-ABA0,SOLTEAM,	1	BLOCK(-)
46	3UC0001316GP	,FUSE,CERAMIC,SLOW,6.3A,250V,5*20mm,215 06.3,LITTELFUSE,P:43-30323-01	1	F100
46-1	3UC0001311GP	,FUSE,CERAMIC,SLOW,6.3A,250V,5*20mm,TSC,WALTER,	1	
47	3UH0001511GP	,FUSE CLIP,C5191,5*20mm,FOR SONY,WL-210A(SH),WALTER,	2	FOR F100*2

48	4HC0021803GP	,WIRE,UL1015,18AWG,GRN/YEL,65mm,W/FLAT,W/TUBE,R:3,	1	FOR SOCKET-CASE
49	4HC0069002GP	,WIRE,UL1015,14AWG,BLACK,90/90mm,W/HOOK,W/FLAT,R:2,	1	O/P WIRE(GND)
50	4HC0069102GP	,WIRE,UL1015,14AWG,RED,90/90mm,W/HOOK,W/FLAT,R:2,	1	O/P WIRE
51	4HC0069202GP	,WIRE,UL1015,18AWG,BLACK,170mm,SLEEVE,W/TUBE,R:2,	1	FOR SOCKET-SW
52	4JA0005711GP	,JUMPER WIRE,COPPER,D=0.6mm(FOR DIP),OR D=0.6*53mm(FOR AI),HLT,FOR SONY,Y:M017-00153-00	0.000 109	JP114(17.5),JP117(6)
53	4TA0008227GP	,CONNECT,3.96mm,3PIN,C/O 2,A3963WV2-3P-D,JOWLE,	1	CN100
54	4TA0012300GP	,CONNECT,2.5mm,2PIN,	1	CN210
55	4TA0029900GP	,CONNECT,2mm,2PIN,180',A2001WV2-2P,	1	CN211
56	4WC0014502GP	,CONN,UL1015,18AWG,3P50,W/SLEEVE,R:2,	1	FOR SOCKET-SW
57	4WG0002401GP	,CONN,UL1430,22AWG,4P170,W/HOOK,W/TUBE,R:1,	1	FOR CN214-PCB
58	5CC0303903GP	,CASE,SPCC,BOTTOM,FSP276-1P01,t=1.2,R:3,	1	BOTTOM CASE
59	5CC0304003GP	,CASE,SPCC,TOP,FSP276-1P01,t=1.2,R:3,	1	TOP CASE
60	5HA0469501GP	,HEAT SINK,AL,23H*29L*10W,R:1,	1	HS101
61	5HA0469703GP	,HEAT SINK,AL,50H*100L*28W,R:3,	1	HS100
62	5HA0469803GP	,HEAT SINK,AL,50H*90L*28W,R:3,	1	HS200
63	5HC0100401GP	,HEAT SINK,COPPER,21H*20L*1W,t=1,R:1,	1	HS102
64	5IA0000101GP	,INSULATOR,RUBBER,SILICON,13*20*0.23,TO-220,GRAY,R:1	1	FOR D120
65	5IA0003302GP	,INSULATOR,RUBBER,SILICON,18.5*13*0.2,RED,TO-220,R:2,	2	FOR Q210A,FOR Q210B
66	5IA0024501GP	,INSULATOR,RUBBER,SILICON,26.5*20*0.23,GRAY,R:1,	1	FOR Q120
67	5IE0209603GP	,INSULATOR,MYLAR FILM,283*156*0.43,ADHESIVE,P.P.(ITW FORMEX GK-17),BLACK,UL94V-0,R:3,	1	FOR BOTTOM CASE
68	5IE0209704GP	,INSULATOR,MYLAR FILM,93*51*0.43,ADHESIVE,P.P.(ITW FORMEX GK-17),BLACK,UL94V-0,R:4,	1	FOR BOTTOM CASE
69	5IF0004400GP	,HEAT TUBE,125'C,BLK,D=20mm,	0.03	FOR O/P(30)
70	5IF0006900GP	,HEAT TUBE,125'C,BLK,D=15,P:64-00111-01	0.052	FOR B CORE(32),FOR C150(20)
71	5IJ0001300GP	,INSULATOR,PAD,6.2*4.5*3.5,TO-220,TW-3,	3	FOR D120,FOR Q210A,FOR Q210B
72	5IJ0008800GP	,INSULATOR,PAD,GND CONNECTOR,TIN PLATED,D=8,GND-8T,	1	PG100
73	5IJ0017513GP	,INSULATOR,PCB SPACER SUPPORT,5*4.5,DCC-4.5,KANG YANG,	2	SP100,SP101
74	5NA0000901GP	,NUT,MACHINE,M3*P0.5,NI,TOOTH,R:1,	4	FOR DC FAN*4
75	5NA0001501GP	,NUT,MACHINE,M3*0.5,ZN,R:1,	1	FOR U700
76	5NC0000101GP	,NUT,W/TOOTH W/WASHER,#8-32,ZN,R:1,	3	FOR BLOCK*2,FOR CASE GND
77	5OA0033801GP	,ACCESSORY,EMI INSULATOR,???,TINPLATE,16H*47.6L*20W,t=0.3,R:1,	1	FOR INLET
78	5OG0010302GP	,ACCESSORY,FAN GUARDS,C1008,60*60,t=5,BLACK,R:2,	1	FOR DC FAN
79	5SA0013701GP	,SCREW,MACHINE,PHMS,M3*8,ZN,R:1,	2	FOR BD100,FOR U700
80	5SA0013801GP	,SCREW,MACHINE,PHMS,M3*10,ZN,R:1,	5	FOR Q151,FOR Q150,FOR D120,FOR Q210A,FOR Q210B
81	5SA0013901GP	,SCREW,MACHINE,PHMS,M3*12,ZN,R:1,	1	FOR Q120
82	5SA0015401GP	,SCREW,MACHINE,PHMS,M3*6,ZN,BLACK,3TH CHROME,R:1,	3	FOR HS200*2,FOR HS100*1
83	5SA0022901GP	,SCREW,MACHINE,BHMS,M3*0.5*6,ZN,BLACK,R:1,	4	FOR CASE*4
84	5SA0040502GP	,SCREW,MACHINE,BHMS,M3*0.5*32,ZN,BLACK,R:2,	4	FOR DC FAN*4
85	5SA0043101GP	,SCREW,MACHINE,BHMS,???,M3*0.5*6,ZN,BLACK,NYLOK,R:1,	4	FOR CASE*4
86	5SC0007501GP	,SCREW,MACHINE,PHMS,SW/PW,M3*0.5*6,NI,R:1,P:54-01429-01,R.A	9	FOR PCB*4,FOR TH210,FOR METER*4
87	5SE0006801GP	,SCREW,TAPPING,PHMS,M2.5*0.45*6,NI,R:1,	2	FOR HS200*2
88	5SE0010101GP	,SCREW,TAPPING,FHMS,M3*0.5*8,ZN,BLACK,R:1,	2	FOR SOCKET*2
89	6AP0012101GP	,PAD,10*10*4.3,ADHESIVE,BLACK,P-100,R:1,	1	SP102
90	6AP0016601GP	,PAD,D=18.2,H=7.8,ADHESIVE,BLACK,EVA+50% PP,GL-6S-50B,R:1,	4	FOR CASE*4

91	6JC0000100GP	,GLUE,SCREW FIXATIVE,2100,	0.000 48	
92	6JE0001419GP	,GLUE,RTV,WHITE,333ml,HEAT CONDUCTION,Sp. Gr. 1.7,ES2031,CANADA,	0.000 1	FOR TH700
93	6JE0002419GP	,GLUE,RTV,WHITE,2600ml,Sp. Gr. 1.4,ES2044H(ES2482W),CANADA,	0.001 6	
94	6JF0000100GP	,GLUE,HEAT TRANSFER,FOR SONY,SC180,EURO FLUX,	0.000 2424	
95	6LL0879203GP	,LABEL,ASTRON,SS-25,FSP276-1P01,cTUVus,TUV/GS,MATTE SILVER,100-240V,3.7A,R:3,	1	ASTRON LABEL
96	6LO0539402GP	,LABEL,BLANK,25L*12H,R:2,	1	SN&REV LABEL
97	6MS0019802GP	,MANUAL,SAFETY INFORMATION,cTUVus,TUV/GS,ENGLISH,FSP276-1P01,R:2,	0.125	FOR CARTON
98	6PB0238901GP	,CARTON BOX,FSP,555L*395W*220H,FSP276-1P01,8PCS,R:1,	0.125	CARTON
99	6RA0000200GP	,CABLE TIE,2.5*100mm,LCT-5L,	4	CABLE TIE*4
100	6RC0001702GP	,PLASTIC BAG,CARTON,1150*740*0.05,RED,nPCS,FOR SONY,R:2,Y:M083-11307-00	0.125	BAG
101	6RE0011101GP	,BUBBLE BAG,430*260,RED,FSP276-1P01,????,R:1,	1	BUBBLE BAG
102	7CT0005926GP	,CORE,FER,RH3.5*.3.2*1.6,GL5B,ui=750,GL5B RH3.5*3.2*1.6,BIPOLAR,	10	FOR D120*2,FOR CY107*2,FOR CY100*2,FOR CY101*2,FOR CY102*2
103	7CT0014726GP	,CORE,FER,RH14.2*28.5*8,GL5B,ui=750,GL5BRH14.2*28.5*8,BIPOLAR,	1	FOR SW-PCB
104	7CT0023226GP	,CORE,FER,RH18.4*28.5*11,GL5B,UI=750,GL5B RH18.4*28.5*11,BIPOLAR,	1	FOR O/P WIRE
105	8BB02711	,G.P,ASSEMBLY,OPEN FRAME,CONTROL BOARD,SS-30,FSP345-1P01,RA201,	1	CONTROL BOARD
106	1YS0000114GP	,THY,SCR,0.8A,400V,TO-92,FOR SONY,BT169D,NXP/PHILIPS,Y:M080-18008-00	1	IC700
107	2CM0001800GP	,CAP,MONO,104P,K,50V,X7R,FOR SONY,	1	C705
108	2FN0004817GP	,THERMISTOR,100K ohm,0.01A,6.5*3.5,PIN=31,TTC05104KSY,THINKING,	1	TH700
109	2RC0011000GP	,RES,C.F,7.5K ohm,1/4W,J,	1	R704
110	2RO0126400HF	,RES,M.OX,560 ohm,1W,J,S-SIZE,	1	R705
111	3BS0276011GP	,PCB,SS,METER BOARD,CEM-1,1.6t,FSP345-1P01/01A,10PCS,1 O/Z,??KB,R:1-01,	1	METER BOARD
112	4HD0009101GP	,WIRE,UL1430,22AWG,WHITE,100mm,W/HOOK,W/TUBE,R:1,	1	FOR PCB-D
113	4TA0021627GP	,CONNECT,2mm,4PIN,180',A2001WV2-4P,JOWLE,	1	CN214
114	8BJ07317	,G.P,ASSEMBLY,OPEN FRAME,SMT,SS-25,FSP276-1P01,RA201,	1	SMT
115	1DC0005828GP	,DIODE,SUPER FAST,1A,1000V,SMA,SMD,RS1M,LITEON,	1	D122
115-1	1DC000583BHF	,DIODE,SUPER FAST,1A,1000V,DO-214AC(SMA),SMD,RS1M,POWER SILICON,	1	
116	1DR0003629GP	,DIODE,SWITCH,0.15A,100V,SOD-123,SMD,FOR SONY,1N4148W,PAN JIT,	10	D711,D713,D210A,D210B,D712,D211A,D211B,D150,D151,D155
116-1	1DR0004814GP	,DIODE,SWITCH,0.215A,100V,SOD-123,SMD,BAS16H,NXP/PHILIPS,	10	
116-2	1DR0003689GP	,DIODE,SWITCH,0.15A,100V,SOD-123,SMD,FOR SONY,1N4148W-V,VISHAY,	10	
117	1IE0001863GP	,IC,PFC CONTROLLER,SMD,PG-DSO-8-13,ICE2PCS02G,INFINEON,	1	IC120
118	1IP0040048GP	,IC,PWM CONTROLLER,SMD,SOT-18,FOR SONY,SSC9512S,SANKEN,	1	IC150
119	1IW0001414GP	,IC,SYNCHRONOUS RECTIFICATION,SMD,SOIC-8,TEA1791T,NXP/PHILIPS,	2	IC210A,IC210B
120	1TB0000414GP	,TR,PNP,-0.6A,-60V,SOT-23,SMD,FOR SONY,PMBT2907A,NXP/PHILIPS,	1	Q152
120-1	1TB0000419GP	,TR,PNP,-0.6A,-60V,SOT-23,SMD,FOR SONY,MMBT2907ALT1G,MOTOROLA,Y:M080-20007-00,P:16-27562-01,R.B	1	
120-2	1TB0000411GP	,TR,PNP,-0.6A,-60V,SOT-23,SMD,KST2907A,FAIRCHILD,P:16-12019-01	1	
121	1TD0000914GP	,TR,NPN,0.6A,40V,SOT-23,SMD,FOR SONY,PMBT2222A,NXP/PHILIPS,	1	Q711
121-1	1TD0000919GP	,TR,NPN,0.6A,40V,SOT-23,SMD,FOR SONY,MMBT2222ALT1-G,MOTOROLA,P:13-27104-01,R.B	1	
122	2CB0008700GP	,CAP,SMD,1206,104,K,250V,X7R,	2	C210A,C210B
123	2CC0001400GP	,CAP,SMD,0805,102,K,50V,X7R,FOR SONY,Y:M010-15026-00,P:21-30542-01,R.B	1	C701

124	2CC0001700GP	,CAP,SMD,0805,681,K,50V,X7R,	1	C156
125	2CC0001800GP	,CAP,SMD,0805,104,K,50V,X7R,FOR SONY,P:21-12006-01,R.G	7	C122,C124,C155B,C163,C703,C751,C726
126	2CC0001900GP	,CAP,SMD,0805,471,K,50V,X7R,FOR SONY,Y:M010-15025-00	2	C213A,C213B
127	2CC0002500GP	,CAP,SMD,0805,472,K,50V,X7R,FOR SONY,	2	C201,C127
128	2CC0004600GP	,CAP,SMD,0805,101,K,50V,NPO,FOR SONY,Y:M010-15030-00	2	C157,C128
129	2CC0008100GP	,CAP,SMD,0805,224,K,50V,X7R,FOR SONY,Y:M010-15044-00	4	C161,C154,C126,C200
130	2CC0008700GP	,CAP,SMD,0805,474,K,25V,X7R,FOR SONY,P:21-15148-01	1	C158
131	2CC0009200GP	,CAP,SMD,0805,333,K,50V,X7R,	1	C160
132	2CC0009800GP	,CAP,SMD,0805,471,K,200V,X7R,FOR SONY,	1	C720
133	2CC0011000GP	,CAP,SMD,0805,183,K,50V,X7R,	1	C702
134	2CC0012400GP	,CAP,SMD,0805,105,K,50V,X7R,	3	C125,C211A,C211B
135	2CC0022400GP	,CAP,SMD,0805,47P,K,100V,NPO,	2	C212A,C212B
136	2RS0000100GP	,RES,SMD,0805,100K ohm,F,FOR SONY,	2	R210A,R210B
137	2RS0001900GP	,RES,SMD,0805,120K ohm,F,	1	R125
138	2RS0002600GP	,RES,SMD,0805,10K ohm,F,	4	R121,R160D,R150,R153
139	2RS0002900GP	,RES,SMD,0805,2.2K ohm,F,	1	R200
140	2RS0003300GP	,RES,SMD,0805,10 ohm,J,FOR SONY,Y:M060-23026-00,P:30-25130-01,R.0	4	R152,R155,R151,R755
141	2RS0004100GP	,RES,SMD,0805,4.7K ohm,F,	1	R159
142	2RS0005900GP	,RES,SMD,0805,1.5K ohm,F,	1	R724
143	2RS0011600GP	,RES,SMD,0805,15K ohm,F,FOR SONY,Y:M060-27306-00,P:30-25142-01	1	R160C
144	2RS0012000GP	,RES,SMD,0805,33K ohm,F,P:30-36602-01	1	R127
145	2RS0012500GP	,RES,SMD,0805,1K ohm,F,	4	R212A,R212B,R202,R201
146	2RS0013300GP	,RES,SMD,0805,470 ohm,F,	2	R166,R723
147	2RS0014600GP	,RES,SMD,0805,3K ohm,F,	1	R168
148	2RS0015800GP	,RES,SMD,0805,9.1K ohm,F,	2	R164,R205
149	2RS0021000GP	,RES,SMD,0805,68 ohm,F,	1	R165
150	2RS0023600GP	,RES,SMD,0805,0 ohm,F,	4	R710,JP116,JP118,JP123
151	2RS0026300GP	,RES,SMD,0805,560 ohm,F,	1	R160
152	2RS0026500GP	,RES,SMD,0805,100 ohm,F,FOR SONY,P:30-27557-01,R.A	2	R154,R158
153	2RS0026600GP	,RES,SMD,0805,30.1K ohm,F,	1	R711
154	2RS0035500GP	,RES,SMD,0805,9.76K ohm,F,FOR SONY,	1	R727
155	2RS0037100GP	,RES,SMD,0805,510 ohm,F,FOR SONY,	1	R754
156	2RS0040600GP	,RES,SMD,0805,47 ohm,F,	2	R213A,R213B
157	2RS0041700GP	,RES,SMD,0805,1.24K ohm,F,	1	R214
158	2RS0047200GP	,RES,SMD,0805,22.6K ohm,F,	2	R203,R204
159	2RS0068100GP	,RES,SMD,0805,82.5K ohm,F,	1	R726
160	2RS0069600GP	,RES,SMD,0805,5.1 ohm,F,	1	R122
161	2RS0075300GP	,RES,SMD,0805,4.7 ohm,F,	2	R211A,R211B
162	2RT0001900GP	,RES,SMD,1206,1K ohm,F,Y:M060-26022-00	2	R750,R751
163	2RT0002600GP	,RES,SMD,1206,0 ohm,J,FOR SONY,P:30-14766-01	1	R701
164	2RT0008600GP	,RES,SMD,1206,20 ohm,F,	2	R720A,R720B
165	2RT0010400GP	,RES,SMD,1206,680K ohm,F,Y:M060-26081-00,P:30-28848-01	3	R161A,R161B,R161C
166	2RT0030200GP	,RES,SMD,1206,110 ohm,F,P:30-31685-01	2	R126A,R126B
167	2RT0043800GP	,RES,SMD,1206,3.9M ohm,F,	2	R123,R124
168	2RT0045700GP	,RES,SMD,1206,390K ohm,F,400V,HIGH VOLTAGE,	4	R100A,R100B,R160A,R160B
169	8BL00799	,G.P,ASSEMBLY,OPEN FRAME,RI BOARD,SS-25,FSP276-1P01,RA201,	1	RI BOARD

170	1YS0000114GP	,THY,SCR,0.8A,400V,TO-92,FOR SONY,BT169D,NXP/PHILIPS,Y:M080-18008-00	1	IC750
171	2CD0007321GP	,CAP,CD,103,M,1KV,Z5U,12*5,HI-K2,2Z5U103M102S56,SUCCESS,	1	C164
171-1	2CD0007324GP	,CAP,CD,103,M,1KV,Z5U,11*5,TAPING,ZU102103M100BAND5P,PAN OVERSEAS/WALSIN(DIP),	1	
172	2CD0014021GP0T	,CAP,CD,10P,J,1KV,NPO,6.5*5,TAPING,1NPO100J102S54E,SUCCESS,	1	C151B
172-1	2CD0014013GP0T	,CAP,CD,10P,J,1KV,NPO,5*5,TAPING,CC45SL3AD100JYPN,TDK,	1	
172-2	2CD0014024GP0T	,CAP,CD,10P,J,1KV,NPO,6*4.5,TAPING,CHM6100JL,PAN OVERSEAS/WALSIN(DIP),	1	
173	2CD0018513GP	,CAP,CD,221,K,1KV,6*5,CK45-R3AD221K-VR,TDK,	1	C153
173-1	2CD0018532GP0T	,CAP,CD,221,K,1KV,6*5,TAPING,V-KINK,DESD33A221KN2A,MURATA,	1	
174	2EG0003209GPE	,CAP,AL,LOW ESR,47uF,50V,5000Hrs,105°C,M,6.3*11,TAPING,PET,FOR SONY,KY50VB47MF11E0,N.C.C,P:20-06809-01,20-03155-01,R.B	4	C123,C218,C721,C723
174-1	2EG0003208GPE	,CAP,AL,LOW ESR,47uF,50V,5000Hrs,105°C,M,6.3*11,TAPING,PET,FOR SONY,50YXF47MEFCT1,RUBYCON,P:20-06809-01	4	
175	2EG0005308GP	,CAP,AL,LOW ESR,2.2uF,50V,5000Hrs,105°C,M,5*11,TAPING,YXF,RUBYCON,	1	C159
175-1	2EG0022609GP	,CAP,AL,LOW ESR,2.2uF,50V,5000Hrs,105°C,M,5*11,TAPING,PITCH=2,43mA,KY,N.C.C,	1	
176	2EG0017009GPE	,CAP,AL,LOW ESR,22uF,50V,5000Hrs,105°C,M,5*11,TAPING,PET,KY50VB22RM5X11LLPS,N.C.C,	1	C710
176-1	2EG0005208GP	,CAP,AL,LOW ESR,22uF,50V,5000Hrs,105°C,M,5*11,TAPING,FOR SONY,YXF,RUBYCON,	1	
177	2EG0018609GPE	,CAP,AL,LOW ESR,10uF,50V,5000Hrs,105°C,M,5*11,TAPING,PET,KY50VB10ME11E0,N.C.C,P:20-05722-01,20-29350-01	2	C728,C155A
177-1	2EG0090908GPET	,CAP,AL,LOW ESR,10uF,50V,5000Hrs,105°C,M,5*11,TAPING,PET,PITCH=2.5,T1(??),50YXF10M,RUBCON,	2	
178	8BH02773	,G.P,ASSEMBLY,OPEN FRAME,AI BOARD,SS-25,FSP276-1P01,RA201,	1	AI BOARD
179	1DC0008827GP	,DIODE,SUPER FAST,3A,200V,DO-201AD,Trr:35ns,SF34,T.S,	1	D720
179-1	1DU0001728GP	,DIODE,ULTRAFast,3A,200V,DO-201AD,UF3003,LITEON,	1	
180	1DF0003027GP	,DIODE,FAST,1A,600V,DO-41,1N4937,T.S,	1	D154
180-1	1DF0003028GP	,DIODE,FAST,1A,600V,DO-41,1N4937,LITEON,	1	
181	1DR0000314GP	,DIODE,SWITCH,0.2A,75V,DO-35,FOR SONY,1N4148,NXP/PHILIPS,P:10-00013-01,R.B	1	D750
181-1	1DR0000325GP	,DIODE,SWITCH,0.15A,75V,DO-35,FOR SONY,1N4148,HITACHI/RENESAS,P:10-00013-01,R.B	1	
181-2	1DR0000389GP	,DIODE,SWITCH,0.15A,75V,DO-35,FOR SONY,1N4148-E3,VISHAY,P:10-00013-01,R.B	1	
182	1DZ0001314HF	,DIODE,ZENER,14.5-15.1V,0.5W,SOD27(SC-40),FOR SONY,NZX15B,NXP/PHILIPS,	1	ZD750
182-1	1DZ0001389GP	,DIODE,ZENER,14.5-15.1V,0.5W,DO-35,FOR SONY,TZX15-B,VISHAY,	1	
183	1DZ0007214HF	,DIODE,ZENER,12.9-13.4V,0.5W,SOD27(SC-40),NZX13C,NXP/PHILIPS,	1	ZD702
183-1	1DZ0007289GP	,DIODE,ZENER,12.9-13.4V,0.5W,DO-35,TZX13C,VISHAY,	1	
183-2	1DZ0007225HF	,DIODE,ZENER,12.9-13.4V,0.5W,DO-35,HZ12B3-N,HITACHI/RENESAS,	1	
184	1DZ0008514HF	,DIODE,ZENER,16.3-17.1V,0.5W,SOD27(SC-40),NZX16C,NXP/PHILIPS,	1	ZD710
184-1	1DZ0008589GP	,DIODE,ZENER,16.3-17.1V,0.5W,DO-35,TZX16C,VISHAY,	1	
185	1DZ0024914HF	,DIODE,ZENER,30.2-31.6V,0.5W,SOD27(SC-40),NZX30C,NXP/PHILIPS,	1	ZD703
185-1	1DZ0024925GP	,DIODE,ZENER,30.2-31.6V,0.5W,DO-35,HZ30-3-N,HITACHI/RENESAS,P:11-06584-01,R.B	1	
186	2RD0039800GP	,RES,WIREWOUND(NO-INDUCTIVE),0.11 ohm,2W,J,S-SIZE,	2	R120A,R120B
187	2RO0064600GP	,RES,M.OX,24 ohm,2W,J,S-SIZE,Y:M060-30198-00	1	R215
188	3BS0275912GP	,PCB,SS,MAIN,CEM-1,1.6t,FSP345-1P01,2PCS,2 O/Z,??KB,R:1-02,	1	MAIN
189	4JA0005711GP	,JUMPER WIRE,COPPER,D=0.6mm(FOR DIP),OR D=0.6*53mm(FOR AI),HLT,FOR SONY,Y:M017-00153-00	0.000 269	JP102(12.5),JP222(15)

190	4JF0002711GP	,JUMPER WIRE,0.8mm,HLT,	0.004771	JP100(17.5),JP101(15),JP103(15),JP105(12.5),JP106(12.5),JP107(15),JP108(10),JP109(10),JP110(12.5),JP111(12.5),JP112(17.5),JP113(17.5),JP119(17.5),JP120(12.5),JP121(15),JP122(15),L710(5),JP104(12.5),JP223(15),JP201(12.5),JP202(12.5)
191	8LB0002614GP	,CHOKE,FER,RHW 3.5*3.2*1.6,D=0.8,0.5Ts,BIPOLAR,	1	JP124
192	8LB0002514GP	,CHOKE,FER,RHW 3.5*3.2*1.6,D=0.6,0.5Ts,BIPOLAR,	1	R167
193	8LM0303101GP	,???,CHOKE,FER,T22*14*8+C,D=0.8,45.5Ts,9.7mH,PIN=4,PITCH=10.5,	2	LF101,LF100
194	8LM0325202GP	,CHOKE,HIGH FLUX,T33.02*19.94*10.67(CH330125),D=1,99.5Ts,1.3mH+-12%,PIN=3.8,PITCH=20,W/TAPE,	1	L121
195	8LM0340901GP	,CHOKE,FER,T18*10*6+C(GL6),D=0.8*3,1.5Ts,1.92uH+-35%,PIN=3.8,PITCH=9,	1	L211
196	8LR0002002GP	,CHOKE,FER,DR6*8,0.6,11.5Ts,3.5uH,468-2,	1	L720
197	8LR0007601GP	,CHOKE,FIL,FER,R6*15,1.8,4.5Ts,R:1-00,W/SPEC,	1	L210
198	8TA0056402GP	,X'FMR,EE-13V(10P),D=0.25,88Ts,FSP345-1P01,1mH+-8%,GH-130,	1	T700
199	8TD0065001GP	,X'FMR,ER-40H(14P),D=0.1*100C,30Ts,FSP345-1P01,280uH+-5%,SBI4.2,	1	T150