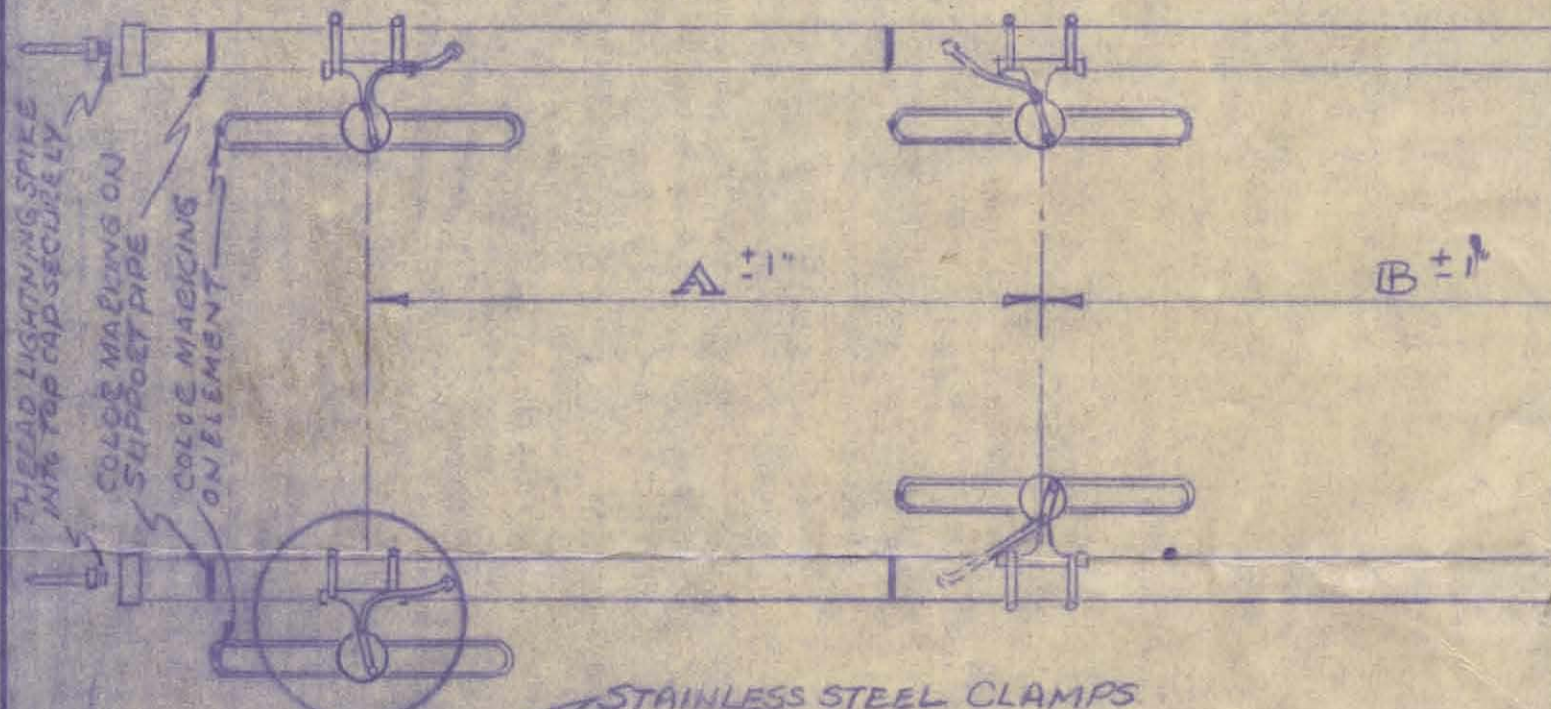


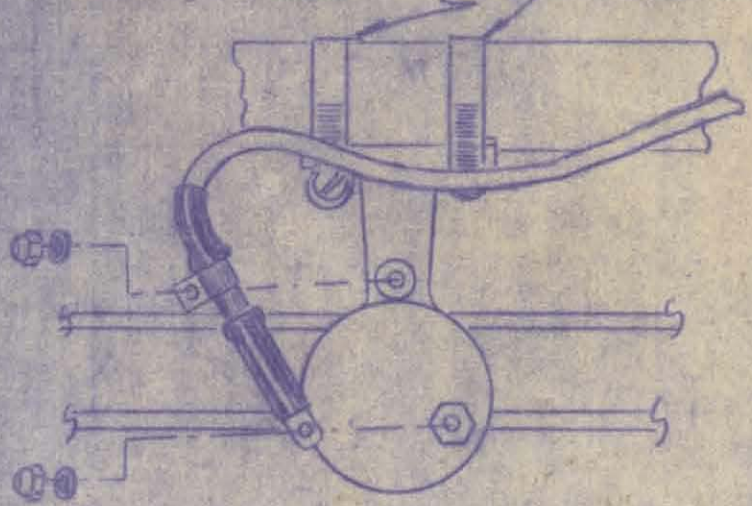
	CAT. NO.		
LENGTH	345-509		
A	61	57 1/2	65 1/4
B	63 1/2	58	69
FREQ	150-162	160-174	140-150

DIRECTION OF MAX  
RADIATION OF  
OFFSET PATTERN



STAINLESS STEEL CLAMPS

NOTE: THE ANTENNA IS 3/4 INCH FROM THE END OF EACH ELEMENT. THE SUPPORT PIPE IS 1/2 INCH FROM THE LOCATION WHICH IS THE UPPER END OF THE ELEMENTS TO THE STAINLESS STEEL CLAMP BAND ON THE ELEMENT SUPPORT PIPE. CONNECT EACH ELEMENT.

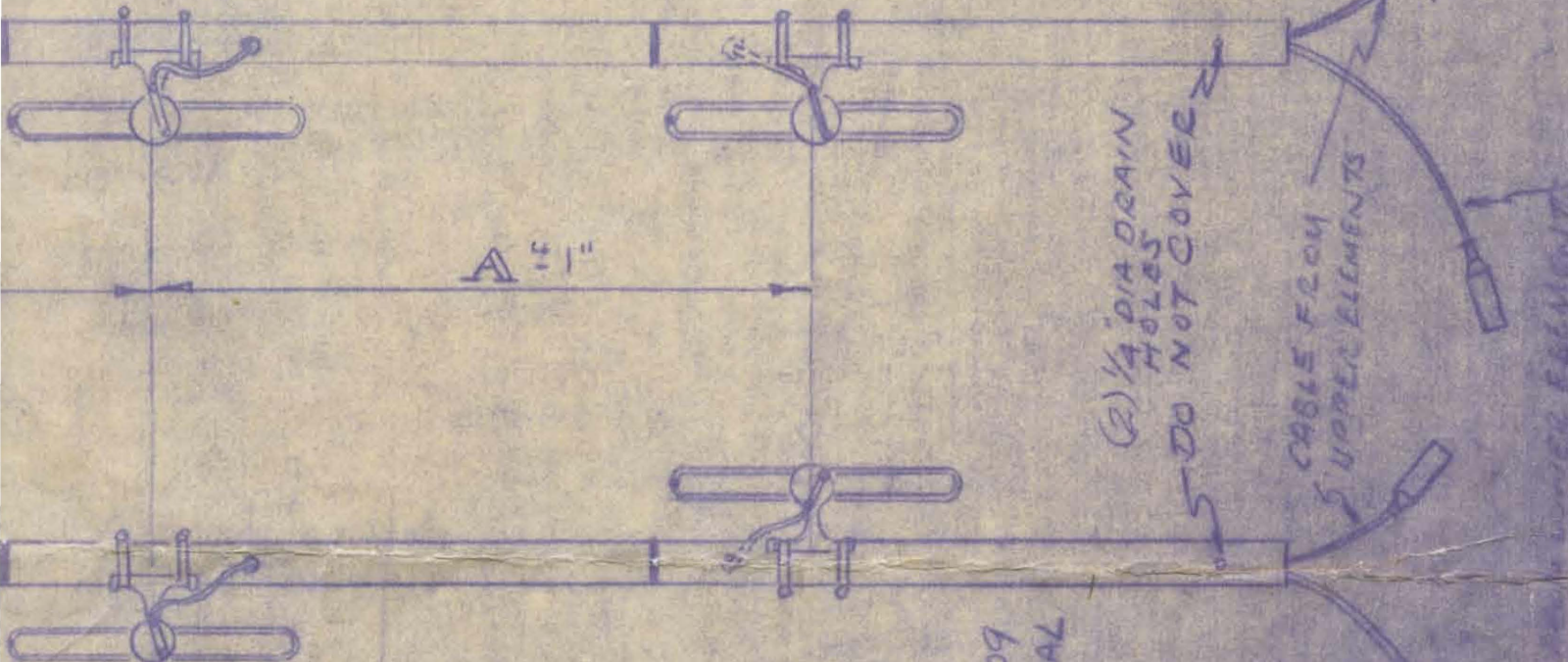


Unless otherwise specified — All dimensions to be gauge checked.

0	REVISION	1	2	3	4	5
	WAS 522 P56A					
	- B. R. P. 76					
	ECN # 79-3-RE					
	ADDED LENGTHS					
	A = 65 1/4, B = 69					
	FREQ. 140-150					
	TR 479 B 70					



CAT. NO. 345-509  
OFFSET



(2) 1/4" DIA DRAIN HOLES  
DO NOT COVER

CABLE FROM UPPER ELEMENTS

CABLE FROM LOWER ELEMENTS

WHEN DISASSEMBLED, THE UPPER ELEMENT IS MARKED WITH A RED BAND. IT IS ALSO MARKED WITH A RED STRIPE WHICH CORRESPONDS TO THE POSITION OF EACH ELEMENT. ASSEMBLE TO SUPPORT PIPE USING THE BRACKETS PROVIDED. MATCH THE RED STRIPES TO THE STRIPE ON THE SUPPORT PIPE. DIRECT THE FEED CABLES TO

CAT. NO. 345-509  
OMNI DIRECTIONAL

EACH HALF TERMINATED WITH A TYPE N MALE CONNECTOR WITH NEOPRENE HOUSING

Dimensions are in inches and title block tolerances apply. All thread dimensions to be met after plating where applicable and are to break all sharp edges .010-.015 after finish machining. All machined surfaces shall be smooth within 63 micro inches.

DIMENSIONAL TOLERANCES			TITLE FIELD ASSEMBLY INSTRUCTIONS FOR BROADBAND ANTENNAS	DRAWING NO.	
BASIC	FRACTIONAL	DECIMAL		M-22836A3	
0" - 1"	± .010	± .003	DRAWN BY 520	8-13-72	APPROVED BY
1" - 6"	± 1/64	± .005	PHELPS DODGE COMMUNICATIONS COMPANY MARLBORO NEW JERSEY		
6" - 24"	± 1/32	± .008			
ALL ANGLES ± 1°					