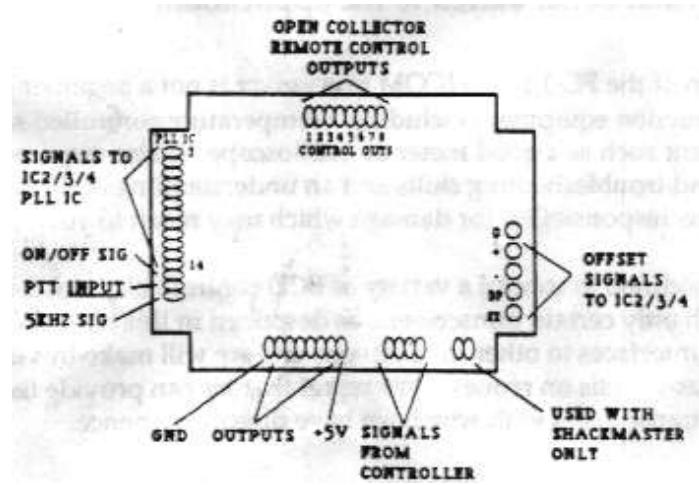
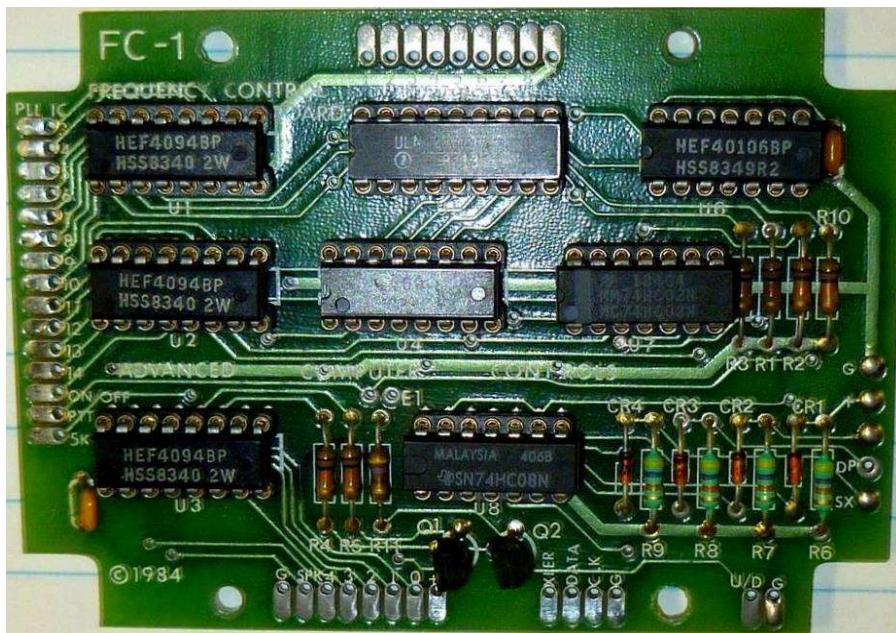


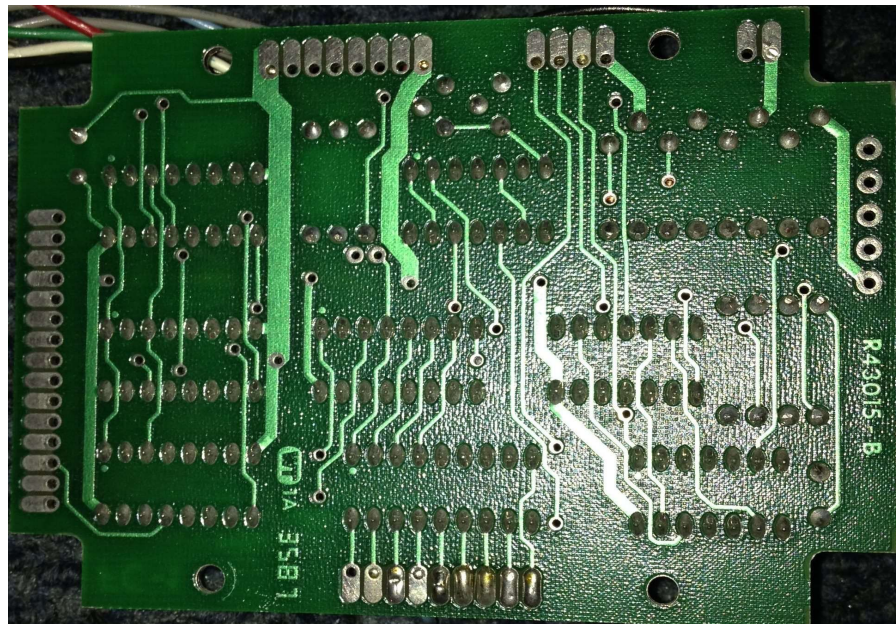
ACC FC-1 PCB Images



www.repeater-builder.com



www.repeater-builder.com

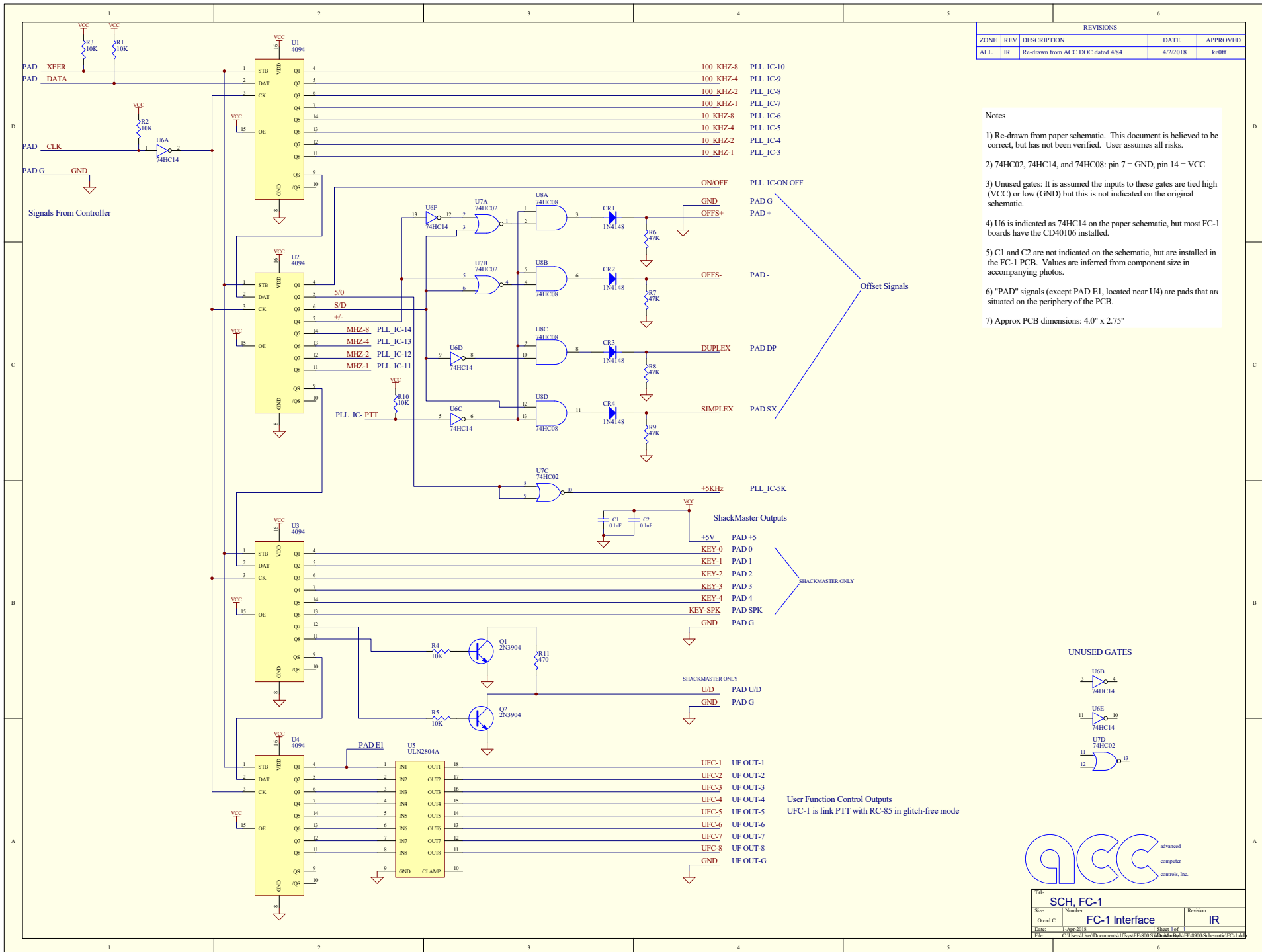


(K2CB) https://forums.qrz.com/index.php?attachments/img_2022-jpg.237292/

REVISIONS				
ZONE	REV	DESCRIPTION	DATE	APPROVED
ALL	IR	Re-drawn from ACC DOC dated 4/84	4/2/2018	keoff

Notes

- 1) Re-drawn from paper schematic. This document is believed to be correct, but has not been verified. User assumes all risks.
- 2) 74HC02, 74HC14, and 74HC08: pin 7 = GND, pin 14 = VCC
- 3) Unused gates: It is assumed the inputs to these gates are tied high (VCC) or low (GND) but this is not indicated on the original schematic.
- 4) U6 is indicated as 74HC14 on the paper schematic, but most FC-1 boards have the CD40106 installed.
- 5) C1 and C2 are not indicated on the schematic, but are installed in the FC-1 PCB. Values are inferred from component size in accompanying photos.
- 6) "PAD" signals (except PAD E1, located near U4) are pads that are situated on the periphery of the PCB.
- 7) Approx PCB dimensions: 4.0" x 2.75"



Title: SCH-FC-1		Revision
Size: 002	Number: FC-1 Interface	IR
Date: 1-Apr-2018	Sheet 1 of 1	
File: C:\Users\ser\Documents\Irfeyz\F-8003\12\shack\fc-1\8000\Schematic\FC-1.dwg		