

## RC-850

## REMOTE CONTROLL of TS-32

## Remotely Controlling the TS-32 / SS-32

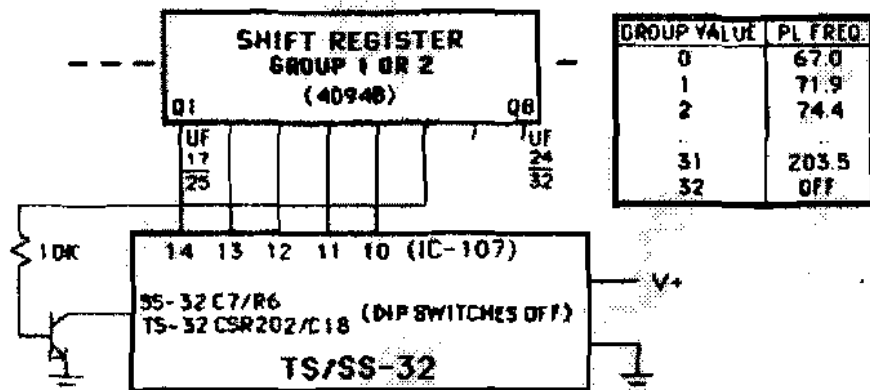
The Comm Spec sub-audible tone encoder/decoders allow frequency selection by DIP switch settings. The five DIP switches permit selection of one of 32 tones. It's easy to remote the DIP switches, by connecting them to remote control logic outputs of the controller.

The expanded general purpose remote control outputs from the controller allow group control of two eight-bit groups. A single user Touch-Tone command can control all eight bits simultaneously. We can use five bits of one of the groups to control the TS/SS-32 frequency, and a sixth if we want to turn it on or off.

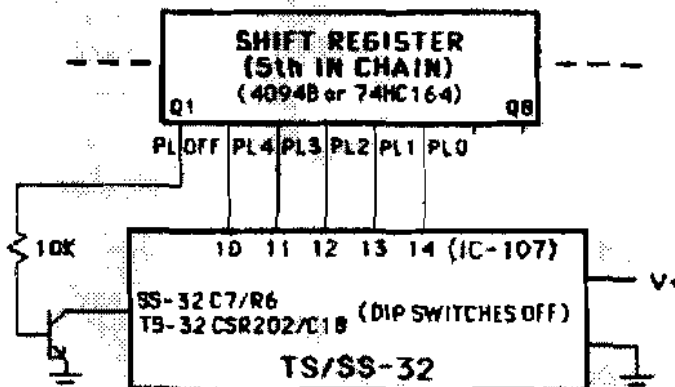
Another method of controlling the encoder/decoder uses the PL frequency bits included in the remote base frequency data stream supplied by the controller. This approach is best used for PL encoding on the remote bases, since the information is stored in remote base memories along with the transceiver frequency.

The TS/SS-32 internal circuitry may operate at its internally regulated 8V supply, or at a lower voltage if VR1 is jumpered. With the circuitry shown below, it's important that the TS/SS-32 internal circuitry operate at the same voltage level as the shift registers. Otherwise, the logic signals supplied by the shift registers may not drive IC-107 in the encoder/decoder properly.

**REMOTE CONTROL OF PL FREQUENCY USING  
EXPANDED REMOTE CONTROL LOGIC OUTPUTS  
(GROUPS)**



**REMOTE CONTROL OF PL FREQUENCY USING  
LINK / REMOTE BASE COMMANDS**



[Back to ACC Stuff](#)

[Back to Repeater Stuff](#)

[HOME](#)

[E-mail your Thoughts](#)